

OUR MEETING ROOMS



PENDLE & RIBBLE BOARDROOMS
Half Day, £55^{+VAT} | Full Day, £90^{+VAT}

These bright and airy rooms can fit up to 10 people and are suited and booted with a large 4K display screen, ultrafast WiFi, whiteboard & flipchart plus refreshments and catering available if required.



CALDER & BRUN SUITES
Half Day, £80^{+VAT} | Full Day, £140^{+VAT}

The ideal spaces for larger meetings, get-togethers and training sessions. These rooms come equipped with large 4K display screen, conference phone, ultrafast WiFi, whiteboard & flipchart plus refreshments and catering available if required.

Capacity: Theatre - 40 | U-Shaped - 18 | Boardroom - 12 | Classroom - 12



THE ASSEMBLY HALL
Half Day, £175^{+VAT} | Full Day, £275^{+VAT}

A beautiful, atmospheric large hall with seating available for 100, makes this the perfect setting for large meetings, functions and lecture-style conferences. The Assembly Hall comes suited and booted with large 4K displays, conference phone, ultrafast WiFi and refreshments to keep you going.



THE LOUNGE
From £150^{+VAT}

Whether it's an intimate business event or a team get-together, impress your guests by hosting it in The Lounge. Available for private hire in the evenings (after 6pm) and at the weekend.



WHAT'S INCLUDED?



Whiteboards,
Flipcharts & Pens



4K Displays



Phone
Conferencing



Ultrafast
WiFi



Range of Refreshments
& Catering Available



THE BUSINESS CLUB



School Lane | Burnley | Lancashire | BB11 1UF
e: info@landmarkburnley.co.uk | t: 01282 940095
www.landmarkburnley.co.uk

www.landmarkburnley.co.uk



OUR MEMBERSHIPS

THE BUSINESS CLUB

Joining the Business Club at The Landmark gives autonomy and freedom to work in a way that suits you, with flexible, rolling monthly terms, and 8:30am til 6pm weekday access. Whether you need a professional space occasionally, to meet, network and collaborate with like-minded individuals, or require more permanent work space without the complicated contracts - there's a membership to suit you.

Our standard Business Club membership starts from just £25^{+VAT} per month and includes:

- Monday to Friday access, 8:30am til 6pm
- Business Club membership card
- Reception services
- Business support services
- Member common areas & kitchen facilities
- Ultrafast WiFi
- Choice of workspaces
- Meeting rooms and boardrooms*
- Bureau Veritas approved Covid-safe environment
- Free parking
- Use of bike racks / charging points*

Sign up today at landmarkburnley.co.uk or speak to the onsite team.

*Additional charges apply.



PREMIUM MEMBERSHIPS

Need more flexibility? Our Business Club+ and Business Club Unlimited memberships give you the freedom to work in a way that suits you - with all the tools you need to run your business successfully including discounted meeting & event space, business-class printing and a prestigious registered business address and mailbox. A premium membership is the perfect option for freelancers, remote workers, commuters or business travellers in need of a space to focus and get to work - plus you can upgrade or downgrade your membership at any time to suit your needs.



BUSINESS CLUB

£25 per month

8:30am - 6pm Access, Monday to Friday

- Meet & greet reception
- Membership access card
 - Ultrafast WiFi
 - Free parking
 - Bike racks
- Car charging points*
- Access to printing / scanning / photocopying*



BUSINESS CLUB+

£55 per month

Business Club Membership, PLUS:

- Access to premium coworking space
- FREE half day meeting room credit
- Registered address & mailbox
- Access to events & business support

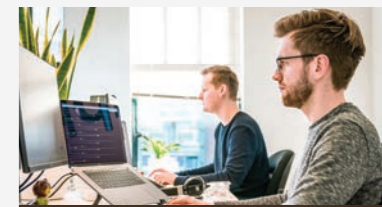


BUSINESS CLUB UNLIMITED

£85 per month

Business Club Membership, PLUS:

- FREE full day meeting room credit
 - Print credit
- Registered address & mailbox
 - Personal locker
- Access to Eagle Labs across the UK
- Access to events & business support



FIXED DESK MEMBERSHIP

£140 per month

Business Club Membership, PLUS:

- Fixed desk space with lockable storage
- FREE full day meeting room credit
 - Print credit
- Registered address & mailbox
 - Personal locker
- Access to Eagle Labs across the UK
- Access to events & business support
 - Phonenumber*

3 months minimum commitment

DISCOUNT AVAILABLE ON 12 MONTH UPFRONT PAYMENT

VIRTUAL MEMBERSHIP

£30 per month

- Prestigious Address for your Business
- Mail Handling (Mail Forwarding at additional cost)
- 2 days access per week to the Business Club
- Access to events, member portal and discounted day passes and meeting room hire (6 months minimum commitment)

*Additional charges apply. All prices listed are subject to VAT.